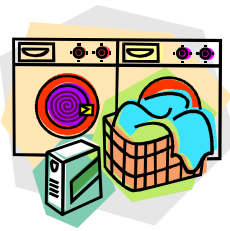


Percentage Increases and Decreases

1. A shop has a sale where everything is 20% off. How much would the following items cost in this sale?



- a) A £12 shirt would cost _____ b) A £4 book would cost _____
- c) A £20 dress would cost _____ d) A £16 game would cost _____



2. A washing powder company has a special offer of 25% extra in all of its boxes of washing powder. How much would these original boxes now weigh?

- a) A 200g box now weighs _____ b) A 500g box now weighs _____
- c) A 1.5kg box now weighs _____ d) A 5kg box now weighs _____

3. a) 25% more than 32 = _____ b) 25% less than 28 = _____
- c) 40% more than 80 = _____ d) 30% less than 70 = _____
- e) 75% more than 36 = _____ f) 40% less than 40 = _____
- g) 60% more than 150 = _____ h) 20% less than 90 = _____
- i) 50% more than 126 = _____ j) 60% less than 30 = _____

Percentage Increases and Decreases

1. A shop has a sale where everything is ___% off. How much would the following items cost in this sale?

a) A £ shirt would cost _____
would cost _____

b) A £ book



c) A £ dress would cost _____

d) A £ game would cost _____



2. A washing powder company has a special offer of ___% extra in all of its boxes of washing powder. How much would these original boxes now weigh?

a) A box now weighs _____

b) A box now weighs _____

c) A box now weighs _____

d) A box now weighs _____

3. a) 25% more than ___ = _____

b) 25% less than ___ = _____

c) 40% more than ___ = _____

d) 30% less than ___ = _____

e) 75% more than ___ = _____

f) 40% less than ___ = _____

g) 60% more than ___ = _____

h) 20% less than ___ = _____

i) 50% more than ___ = _____

j) 60% less than ___ = _____